

Trun

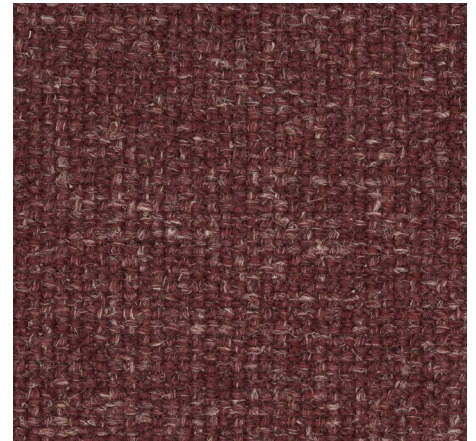
Composition: 45% PES 37% PA 18% LI - Martindale: >80000, - Resistance to pilling: 4 - Colour fastness to wet rubbing: 4 - Colour fastness to dry rubbing: 4-5 - Colour fastness to light: >5



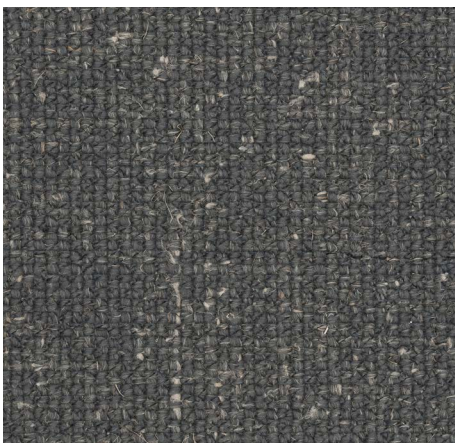
Trun 01



Trun 11



Trun 36



Trun 45



Trun 49



Trun 120



Trun 121



Trun 210



Trun 437

Pine

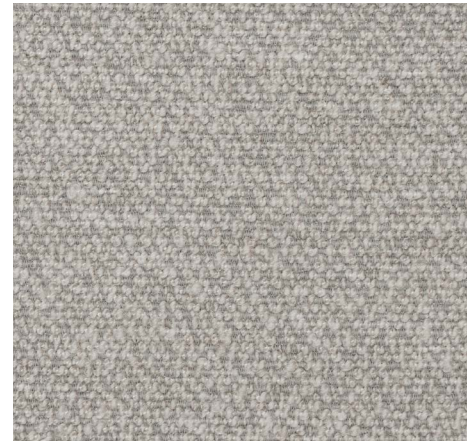
Composition: 90% PES 5% CO 5% PAC - Martindale: 75000, - Resistance to pilling: 4 - Colour fastness to wet rubbing: 5 - Colour fastness to dry rubbing: 5 - Colour fastness to light: 5



Pine 01



Pine 12



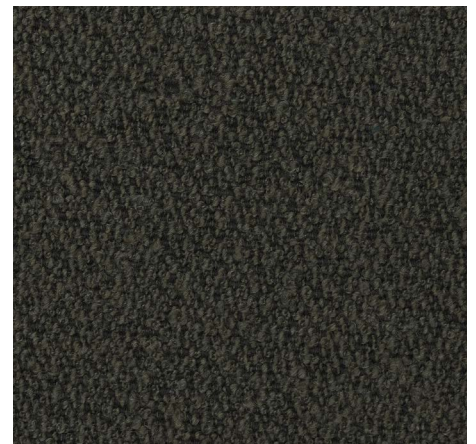
Pine 84



Pine 101



Pine 149



Pine 162



Pine 186



Trun 206

Andermaat

Composition: 100% Pes - Martindale: 40000, - Resistance to pilling: >4 - Colour fastness to wet rubbing: 4 - Colour fastness to dry rubbing: 5 - Colour fastness to light: >5



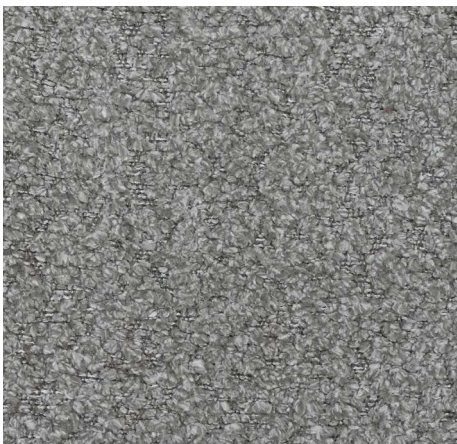
Andermaat 07



Andermaat 08



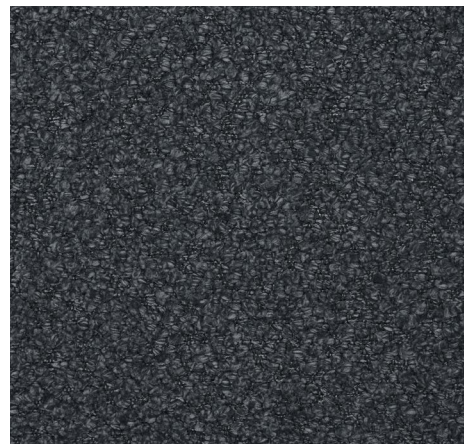
Andermaat 011



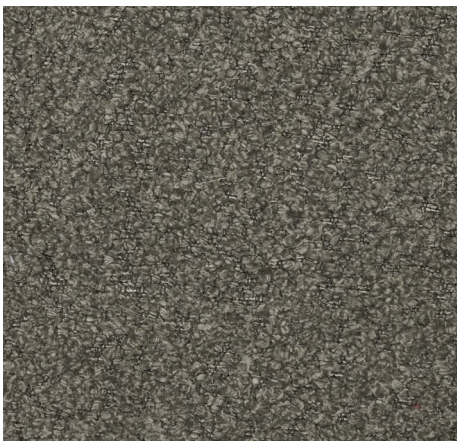
Andermaat 20



Andermaat 36



Andermaat 49



Andermaat 751

Luno

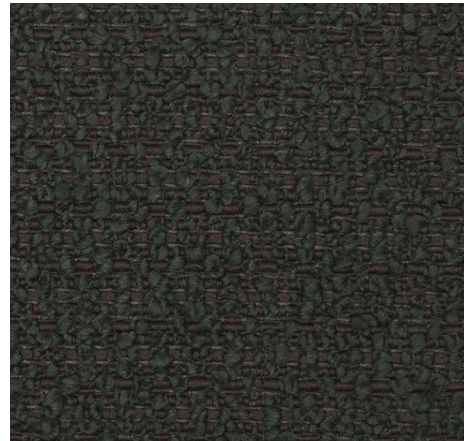
Composition: 95% PL 5% PC - Martindale: >100000, - Resistance to pilling: 4 - Colour fastness to wet rubbing: 4-5 - Colour fastness to dry rubbing: 4-5 - Colour fastness to light: 5



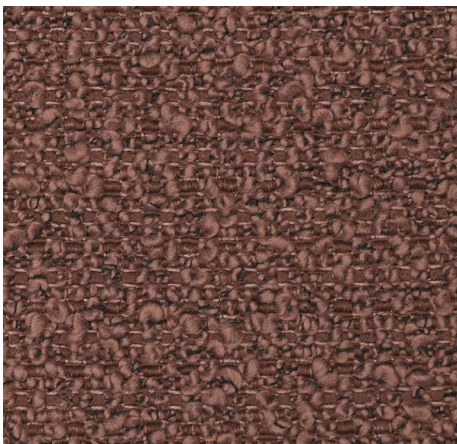
Luno 01



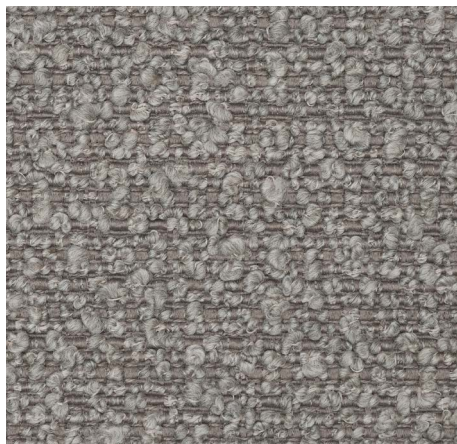
Luno 02



Luno 13



Luno 15



Luno 616



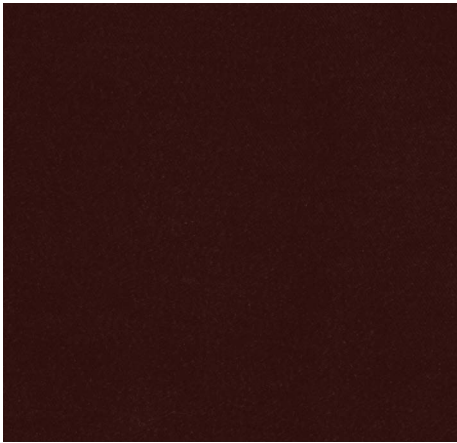
Luno 622



Luno 19

Regency

Composition: PES 37% - Martindale: >40.000, - Resistance to pilling: 4-5 - Colour fastness to wet rubbing: 3-5 - Colour fastness to dry rubbing: 3-5 - Colour fastness to light: 4-5



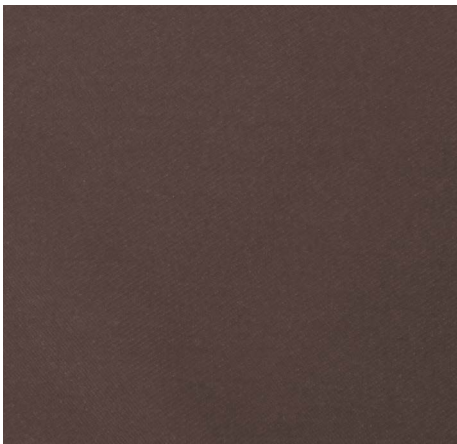
Regency 37



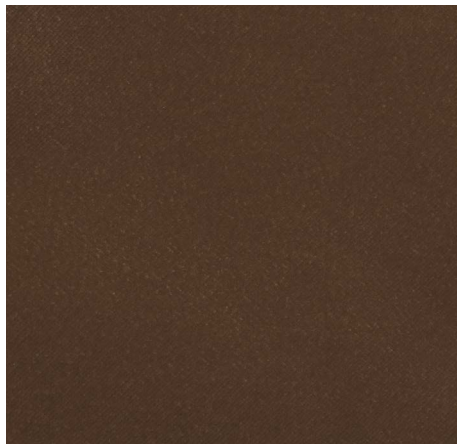
Regency 44



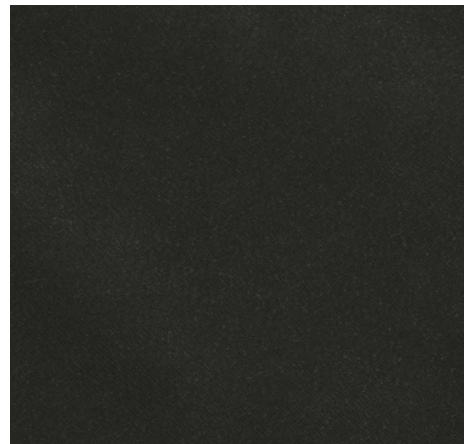
Regency 56



Regency 92



Regency 132



Regency 158



Regency 160